

Miscellaneous Notes

- 1.) THIS PARCEL IS ZONED AS "RESIDENTIAL TWO - R-2" USE WITHIN THE TOWN OF DEWITT.
2.) NORTH ORIENTATION IS BASED ON PHILLIP & ASSOCIATES SURVEY MAP.
3.) THIS SURVEY DOES NOT CONSTITUTE A TITLE SEARCH BY C. T. MALE ASSOCIATES, D.P.C., TO DETERMINE OWNERSHIP OR EASEMENTS OF RECORD...

ABSTRACT NOTE - UNABLE TO PLOT

- NOTE 5 - WATER PRIVILEGES EXCEPTED TO ROBERT DUNLOP AND JOHN FLINT PER D.B. 76, PG. 236 DATED AUGUST 13, 1840.
NOTE 8 - EASEMENT TO SYRACUSE LIGHTING COMPANY PER D.B. 623, PG. 141 DATED APRIL 7, 1930.

Map References

- 1.) BOUNDARY MAP - LANDS OF JKT BUILDERS, INC. PART OF MILITARY LOTS 71 & 72 PREPARED BY PHILLIPS & ASSOCIATES DATED DECEMBER 18, 2013 FILE NO. 12704.005

Legend of Symbols & Abbreviations table listing symbols for GSP WIRE, SIGN, HYDRANT, WATER VALVE, CATCH BASIN, UTILITY POLE, etc.

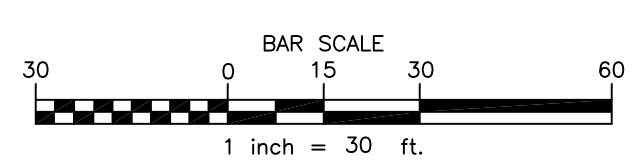
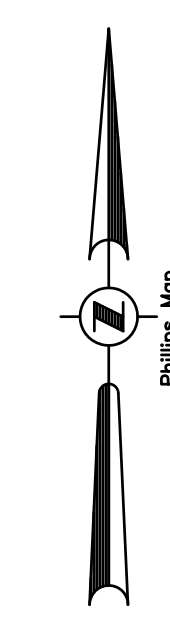
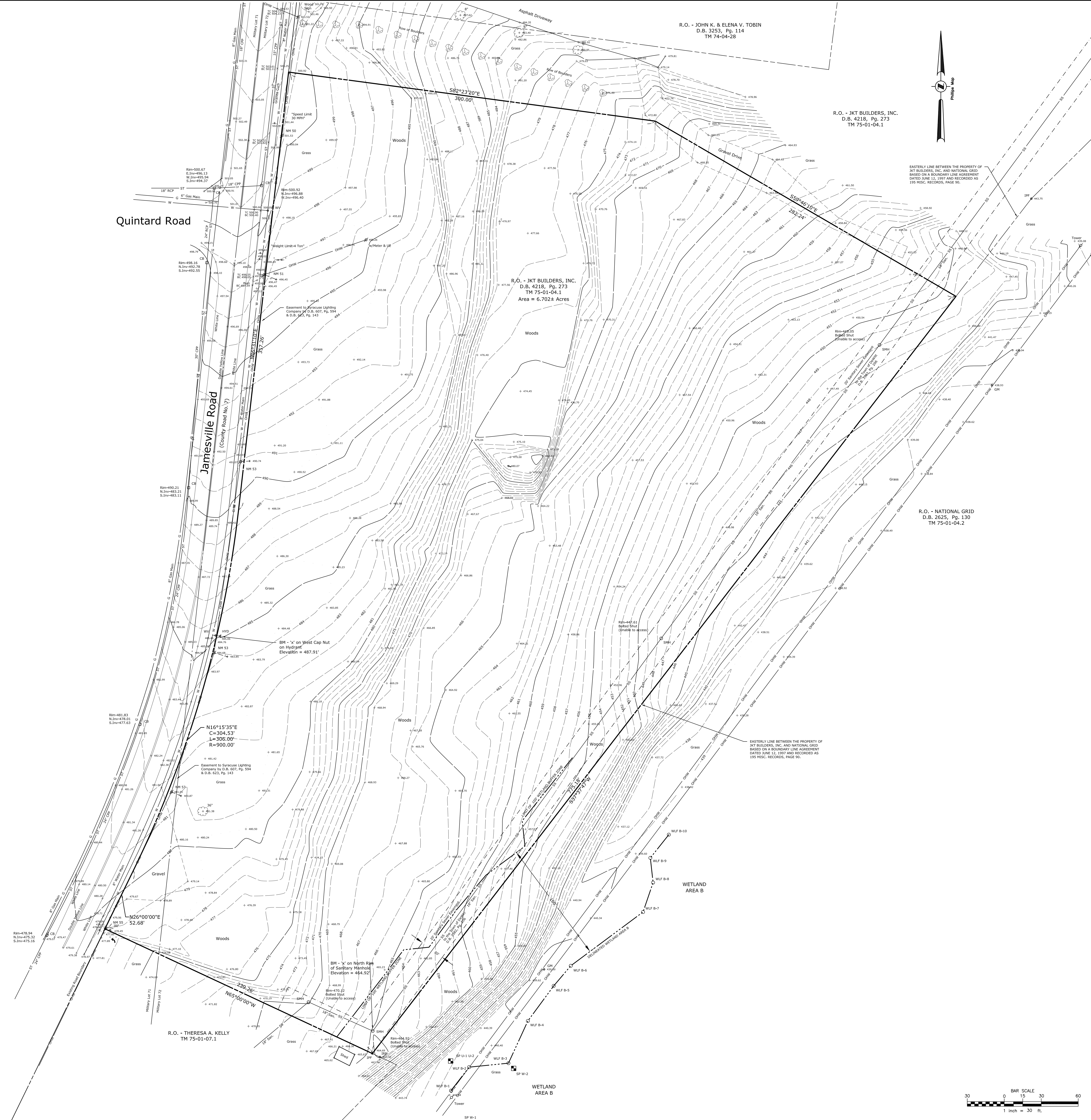


Table containing project metadata: DAVID M. SLISKI P.L.S. NO. 50105, DATE 6/10/14, REVISIONS RECORD/DESCRIPTION, DRAFTER, CHECK, APRR, and TOPOGRAPHIC SURVEY MAP FOR A PORTION OF THE LANDS OF JKT BUILDERS, INC.

ONLY COPIES OF THIS MAP SIGNED IN RED INK AND EMBOSSED WITH THE SEAL OF AN OFFICER OF C.T. MALE ASSOCIATES OR A DESIGNATED REPRESENTATIVE SHALL BE CONSIDERED TO BE A VALID TRUE COPY.